

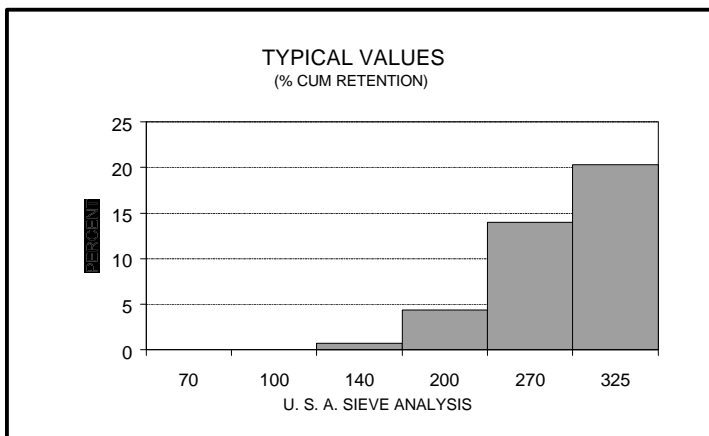


PRODUCT DATA

SIL-CO-SIL[®] 90

GROUND SILICA

PLANT: PACIFIC, MISSOURI



USA STD SIEVE SIZE		TYPICAL VALUES		
		% RETAINED		% PASSING
MESH	MICRONS	INDIVIDUAL	CUMULATIVE	CUMULATIVE
70	212	0.0	0.0	100.0
100	150	0.0	0.0	100.0
140	106	0.7	0.7	99.3
200	75	3.7	4.4	95.6
270	53	9.6	14.0	86.0
325	45	6.3	20.3	79.7

TYPICAL PHYSICAL PROPERTIES

HARDNESS (Mohs)	7	REFLECTANCE (%)	88
MELTING POINT (Degrees F).....	3100	YELLOWNESS INDEX.....	3.5
MINERAL	QUARTZ	SPECIFIC GRAVITY	2.65
pH.....	7.5		

TYPICAL CHEMICAL ANALYSIS, %

SiO ₂ (Silicon Dioxide).....	99.8	MgO (Magnesium Oxide).....	<0.01
Fe ₂ O ₃ (Iron Oxide).....	0.012	Na ₂ O (Sodium Oxide).....	<0.01
Al ₂ O ₃ (Aluminum Oxide).....	0.16	K ₂ O (Potassium Oxide).....	0.01
TiO ₂ (Titanium Dioxide).....	0.01	LOI (Loss On Ignition).....	0.1
CaO (Calcium Oxide).....	0.02		

July 20, 1999

DISCLAIMER: The information set forth in this Product Data Sheet represents typical properties of the product described; the information and the typical values are not specifications. U.S. Silica Company makes no representation or warranty concerning the Products, expressed or implied, by this Product Data Sheet.

WARNING: The product contains crystalline silica - quartz, which can cause silicosis (an occupational lung disease) and lung cancer. **For detailed information on the potential health effect of crystalline silica - quartz, see the U.S. Silica Company Material Safety Data Sheet.**