

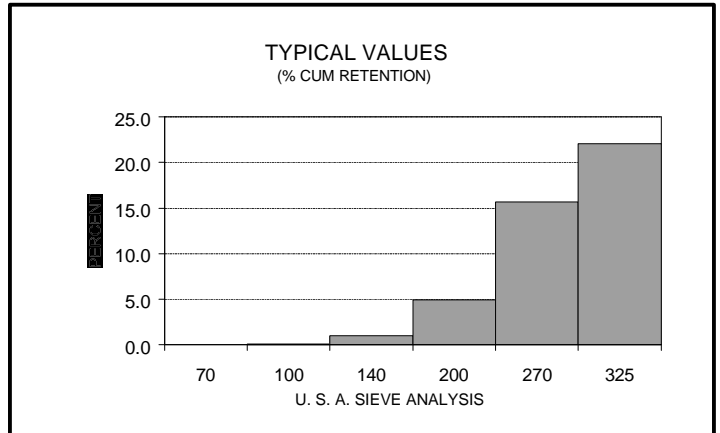


# PRODUCT DATA

## SIL-CO-SIL<sup>®</sup> 125

### GROUND SILICA

PLANT: MILL CREEK, OKLAHOMA



USA STD SIEVE SIZE		TYPICAL VALUES		
		% RETAINED		% PASSING
MESH	MICRONS	INDIVIDUAL	CUMULATIVE	CUMULATIVE
70	212	0.0	0.0	100.0
100	150	0.1	0.1	99.9
140	106	0.9	1.0	99.0
200	75	3.9	4.9	95.1
270	53	10.8	15.7	84.3
325	45	6.4	22.1	77.9

### TYPICAL PHYSICAL PROPERTIES

HARDNESS (Mohs) ..... 7  
 MELTING POINT (Degrees F)..... 3100  
 MINERAL ..... QUARTZ  
 pH..... 7

REFLECTANCE (%) ..... 89.2  
 YELLOWNESS INDEX..... 3.51  
 SPECIFIC GRAVITY ..... 2.65

### TYPICAL CHEMICAL ANALYSIS, %

SiO<sub>2</sub> (Silicon Dioxide)..... 99.7  
 Fe<sub>2</sub>O<sub>3</sub> (Iron Oxide)..... 0.016  
 Al<sub>2</sub>O<sub>3</sub> (Aluminum Oxide)..... 0.14  
 TiO<sub>2</sub> (Titanium Dioxide)..... <0.01  
 CaO (Calcium Oxide)..... <0.01

MgO (Magnesium Oxide)..... <0.01  
 Na<sub>2</sub>O (Sodium Oxide)..... <0.01  
 K<sub>2</sub>O (Potassium Oxide)..... 0.02  
 LOI (Loss On Ignition)..... 0.1

May 29, 1998

**DISCLAIMER:** The information set forth in this Product Data Sheet represents typical properties of the product described; the information and the typical values are not specifications. U.S. Silica Company makes no representation or warranty concerning the Products, expressed or implied, by this Product Data Sheet.

**WARNING:** The product contains crystalline silica - quartz, which can cause silicosis (an occupational lung disease) and lung cancer. **For detailed information on the potential health effect of crystalline silica - quartz, see the U.S. Silica Company Material Safety Data Sheet.**